



# MAY FAIR



## Specially Designed for Milk Agitation.

- Excellent load bearing capacity for agitator's swinging
- Output Shaft as per requirement.
- Motors are available for capacity of Milk Agitator Tanks from 500 to 5000ltrs.



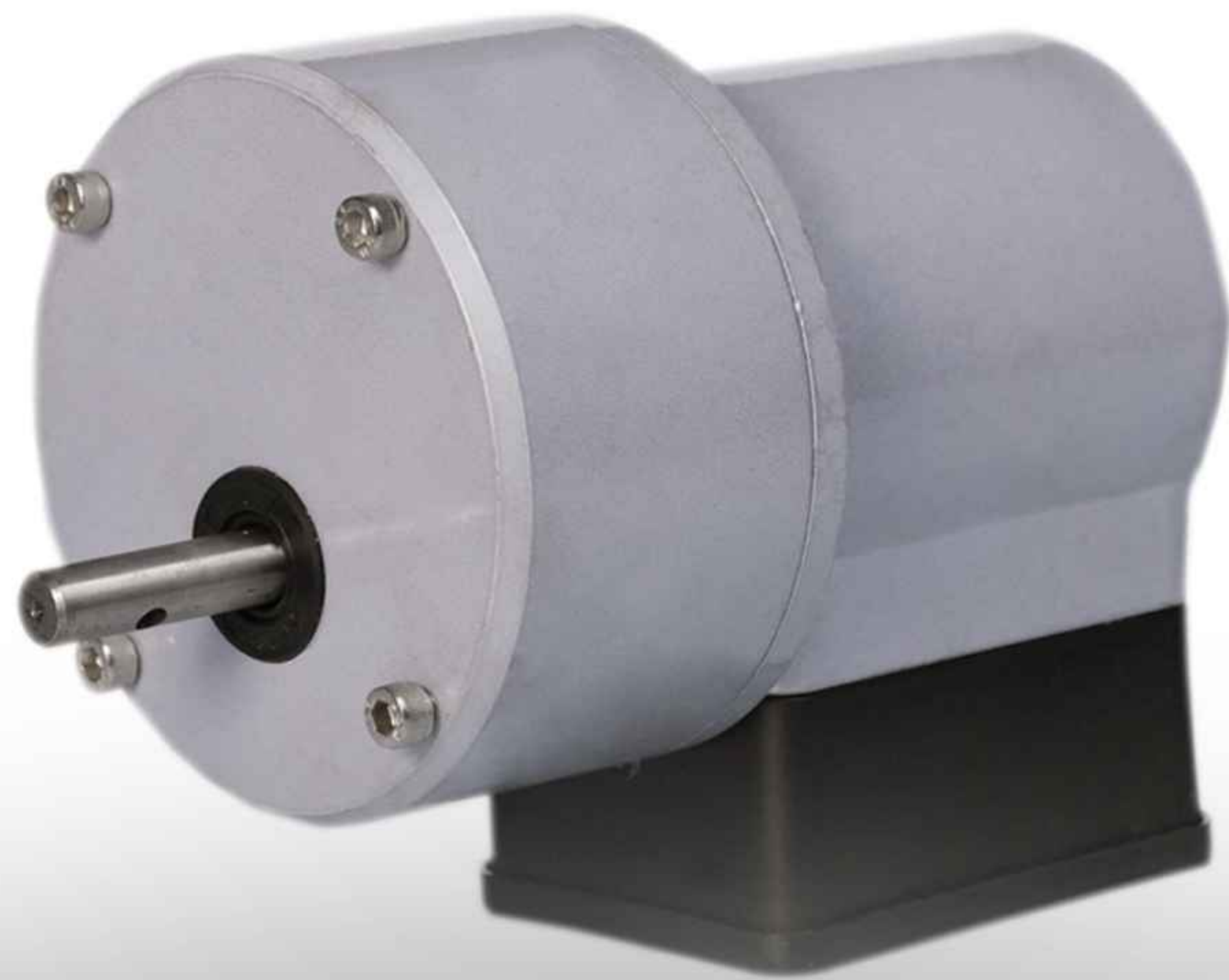
**MF ENGINEERS**

A-9, 14 & 15, DLF Indl Area, Delhi - 110015

Visit us at - [www.pillowplateindia.com](http://www.pillowplateindia.com)

# MAY FAIR

## COMPLETE RANGE OF BMC AGITATOR MOTORS



**Watts** : 30/60  
**Voltage** : 220 (S.Ph)  
**RPM** : 30-32  
**Capacity** : 500/1000 Ltr.

**Watts** : 120  
**Voltage** : 220 (S.Ph)  
**RPM** : 30-32  
**Capacity** : 1000/2000 Ltr.



**Watts** : 180  
**Voltage** : 220 (S.Ph)  
**RPM** : 30-32  
**Capacity** : 3000/5000 Ltr.

# MAY FAIR

## **Gearbox Housing :**



Using CNC Machining Center, Gearbox Housing is machined. We maintain the accuracy of bearing sizes to ensure the best performance of the Gearbox. Gearbox Housing is anodized for long lasting finish.

## **Gears:**

All Gears are made in graded steel and undergoes a process of induction hardening for longer life.

All gear's sizes are maintained as per AGMA standard.

## **Gear Trains:**

There are three gear trains in the box. Ratio of gear box is 53.5. Other gear ratio are also available.

## **Gear box Assembly :**

All the gear boxes are assembled by experienced staff to ensure the best performance. All the gear shafts are loaded on bearings. SKF bearings for motor shafts output shaft is loaded on double angular contact bearing and a sintered bush to provide excellent resistance to the agitator's blade.



## **Motor specifications:**

Housing of Motor is made of extruded aluminum which ensures durability of the Motor.

## **Core Length :**

We use CRNO stamping which has minimum watt losses.

## **Copper Wire :**

We use wire 99.90% pure wire can bear at temperature of up to 120°c. insulation of our copper wire

## **Machining :**

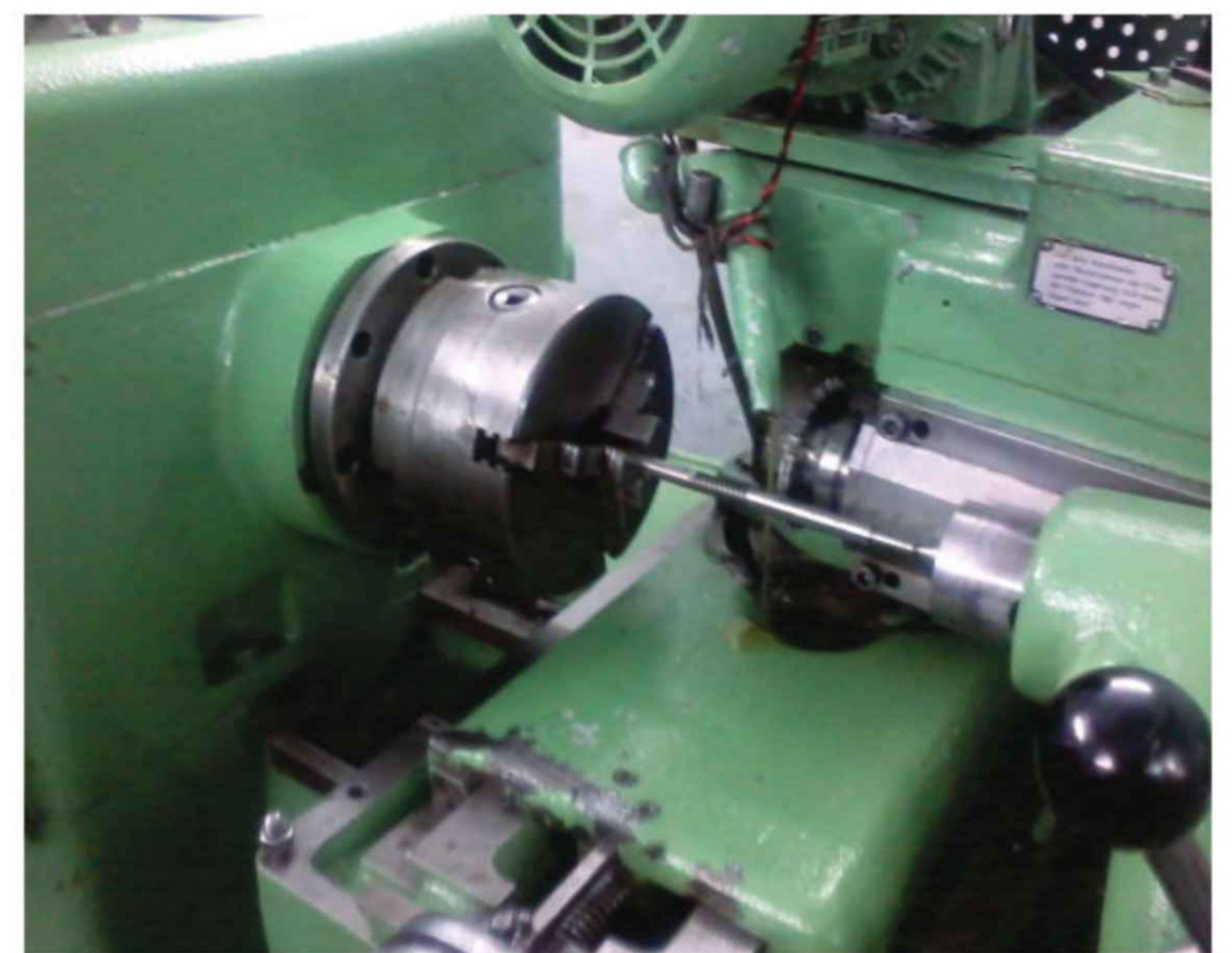
All the motor parts are machined on CNC machines.

## **Winding :**

Winding of the motor is done by experienced professionals. Our motor undergoes a process of insulation hardening to ensure a long life insulation.

## **Terminal Box :**

Terminal box is made up of Nylon. So as to ensure the strength of the plastic Micro switch, Capacitor and connection plate are incorporated in the terminal box.



# MAY FAIR

## Company Profile

May Fair is a well known name in the discipline of manufacturing a remarkable range of products like Gear Boxes, Gear Motors, PMDC Geared Motors, we lay great emphasis on the entire manufacturing processing products so as to ensure impeccability.

### Infrastructure Setup :

To ensure smooth execution of business operation, we have established a sound infrastructure.

we are equipped with

1. Gear Cutting
2. Thread Milling
3. Vertical Machining Center (HAAS)
4. CNC Lathe



### Annual Turnover :

90 L. to 1Cr. (Approx)

Working Area 150 Mtrs.

### Staff :

A team comprising of 20 experienced professional has been associated with us.

### Quality Assurance :

Owing to our commitment towards quality, we ensure to design and develop products with impeccable quality. After completion of production process, we precisely test products on several parameters to ensure their longer service life and efficient performance.

We check our geared motor on following parameters,

- (1) 240 Hr. nonstop running
- (2) No load and on load current specifications
- (3) sound level of geared motor less than 60 DB.

# MAY FAIR

## OUR REPUTED CUSTOMERS

- 1. Dakshina Kannada Co-operative Milk Producers' Union Limited**
- 2. Ice Make Refrigeration**
- 3. Chadha Sales Pvt. Ltd.**
- 4. Schreiber Dynamix Dairies Pvt Ltd.**
- 5. Ahmedabad District Co-op Milk Producer's Union Limited**
- 6. Venture Steels Pvt. Ltd.**
- 7. Bimal Industries Unit - 2**
- 8 Associated Dairy Fab Pvt Ltd.**
- 9. Amrit Dhara Milk Producers**
- 10. Kolar Dairy**
- 11. Promethean Power Systems Pvt. Ltd.**

# MAY FAIR



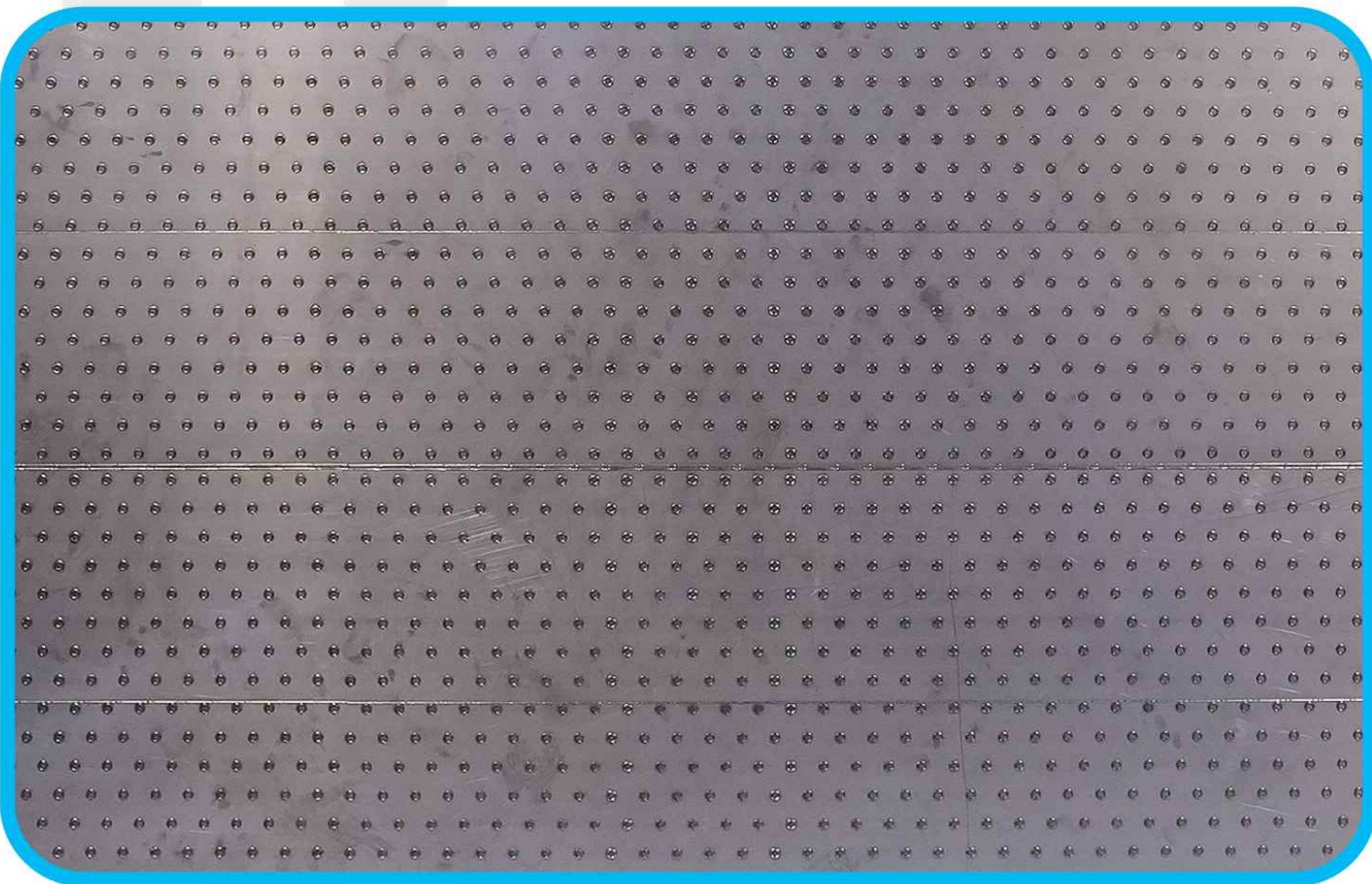
## About Us



- ➡ **More Than 40,000, Motors Working Worldwide.**
- ➡ **Production Capacity 3000 Motors Per Month.**
- ➡ **Onsite Replacement Service Pan India.**
- ➡ **Product Designed In India Developed In India.**
- ➡ **We Develop Special Purpose Geared Motor For All**
- ➡ **Challenging Application**
- ➡ **Replacement Warranty Available Worldwide**

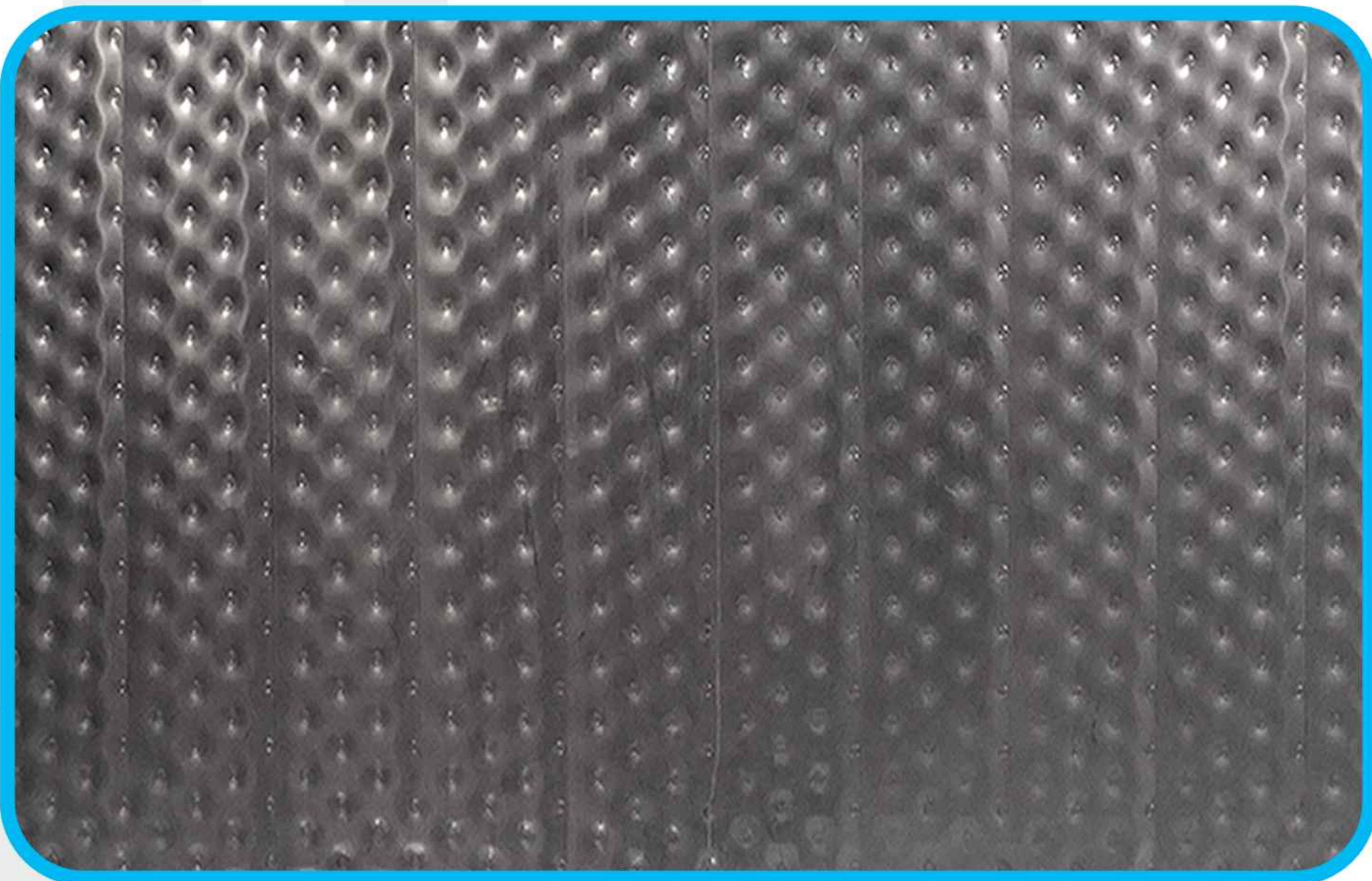
# MAY FAIR

## Mfrs of - Laser Welded Pillow Plates



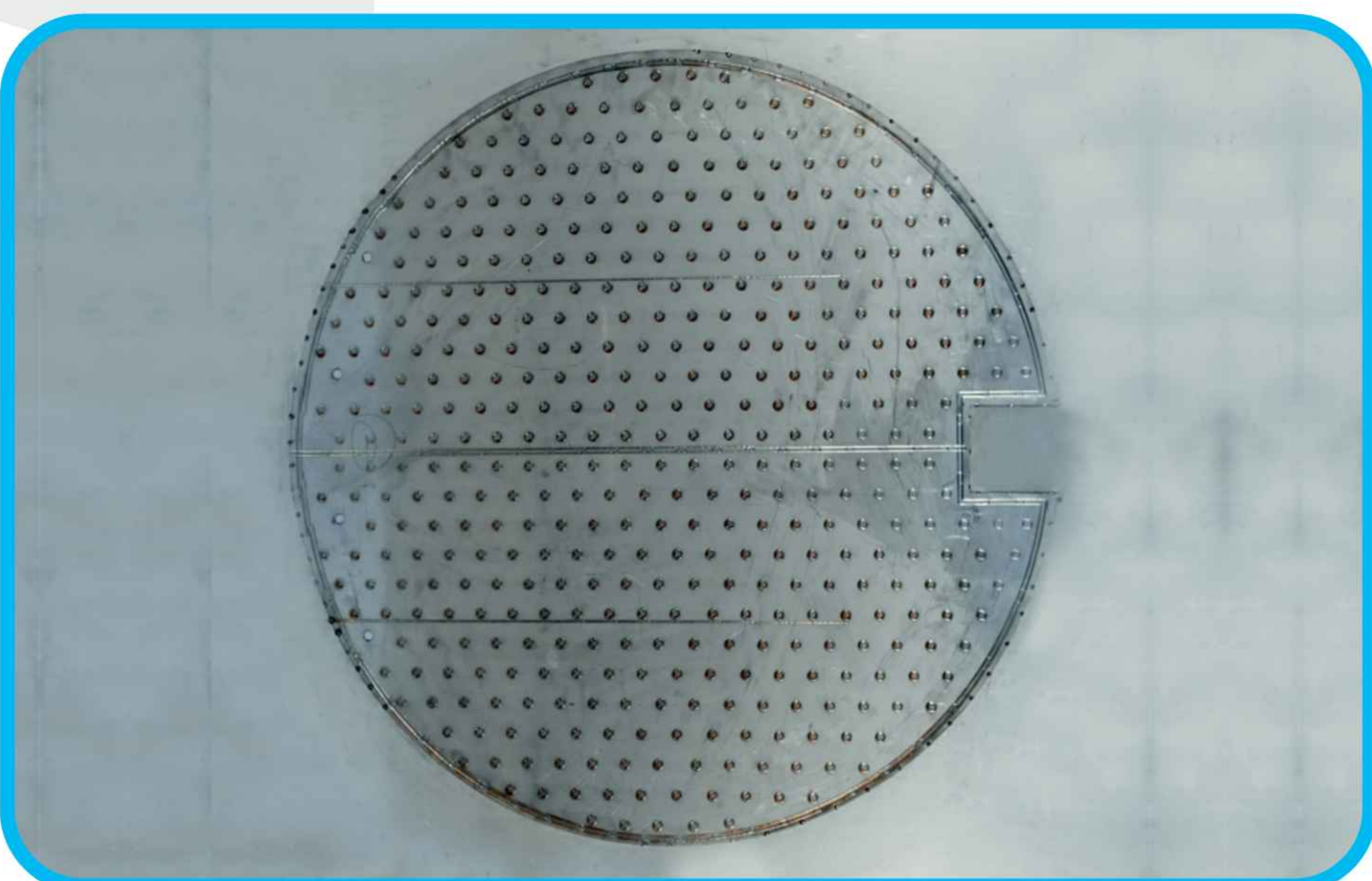
### COMPLETE RANGE OF BMC PILLOW PLATES

**Capacity : 200 To 5000 Ltr.**  
**Top Thickness : 0.8 mm**  
**Bottom Thickness : 2.0 mm**  
**Material : S.S. 304/ S.S 316 L**



### DOUBLE EMBOSSED PILLOW PLATES

**1.2 + 1.2 mm / 1.5 + 1.5 mm**  
**All Sizes Available**  
**Material : S.S. 304 / S.S. 316 L**



### CUSTOMIZED PILLOW PLATES

**We Customize Pillow Plates as  
per Customer Requirements**  
**Material : S.S. 304 / S.S. 316 L**

# MAY FAIR

## SINGLE EMBOSSED PILLOW PLATES APPLICATION

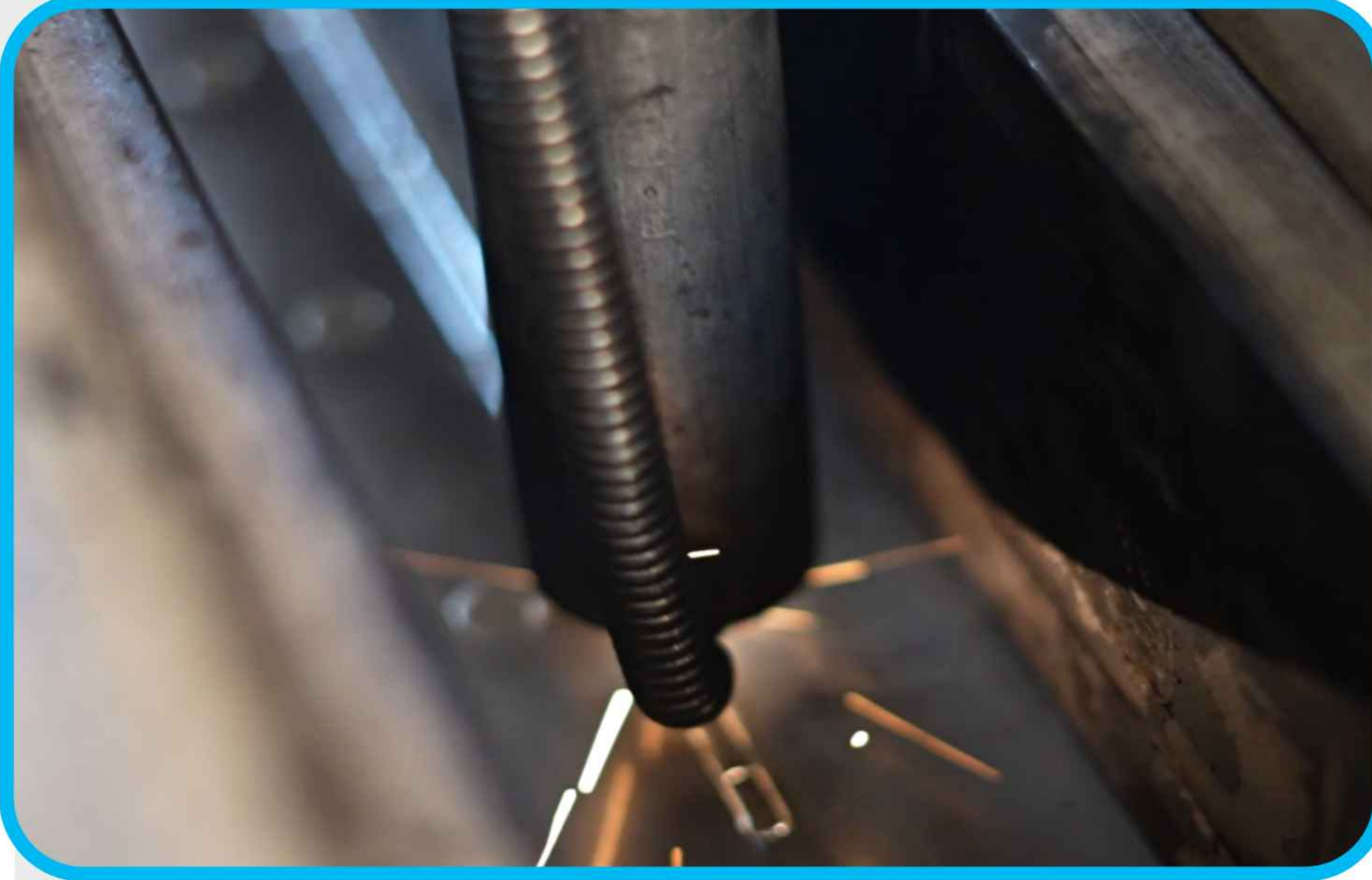
- 1. Cooling / Heating of Beer Tanks.**
- 2. Cooling / Heating of Wine Tanks.**
- 3. Cooling / Heating of Milk Tanks.**
- 4. Cooling / Heating of Process Tanks.**
- 5. Cooling / Heating of Conveyers.**
- 6. Cooling / Heating of Large Surface Area.**

## DOUBLE EMBOSSED SHEET APPLICATIONS

- 1. Falling Films Chillers**
- 2. Immersion Chillers**
- 3. Ice Bank**
- 4. Ice Machines**
- 5. Clamp On Jackets**
- 6. Cooling recovery Banks**
- 7. Immersion Plates**
- 8. Plate Banks**
- 9. Evaporative Condensers.**

# MAY FAIR

## Infrastructure & Testing Facilities



### PILLOW PLATE MACHINE

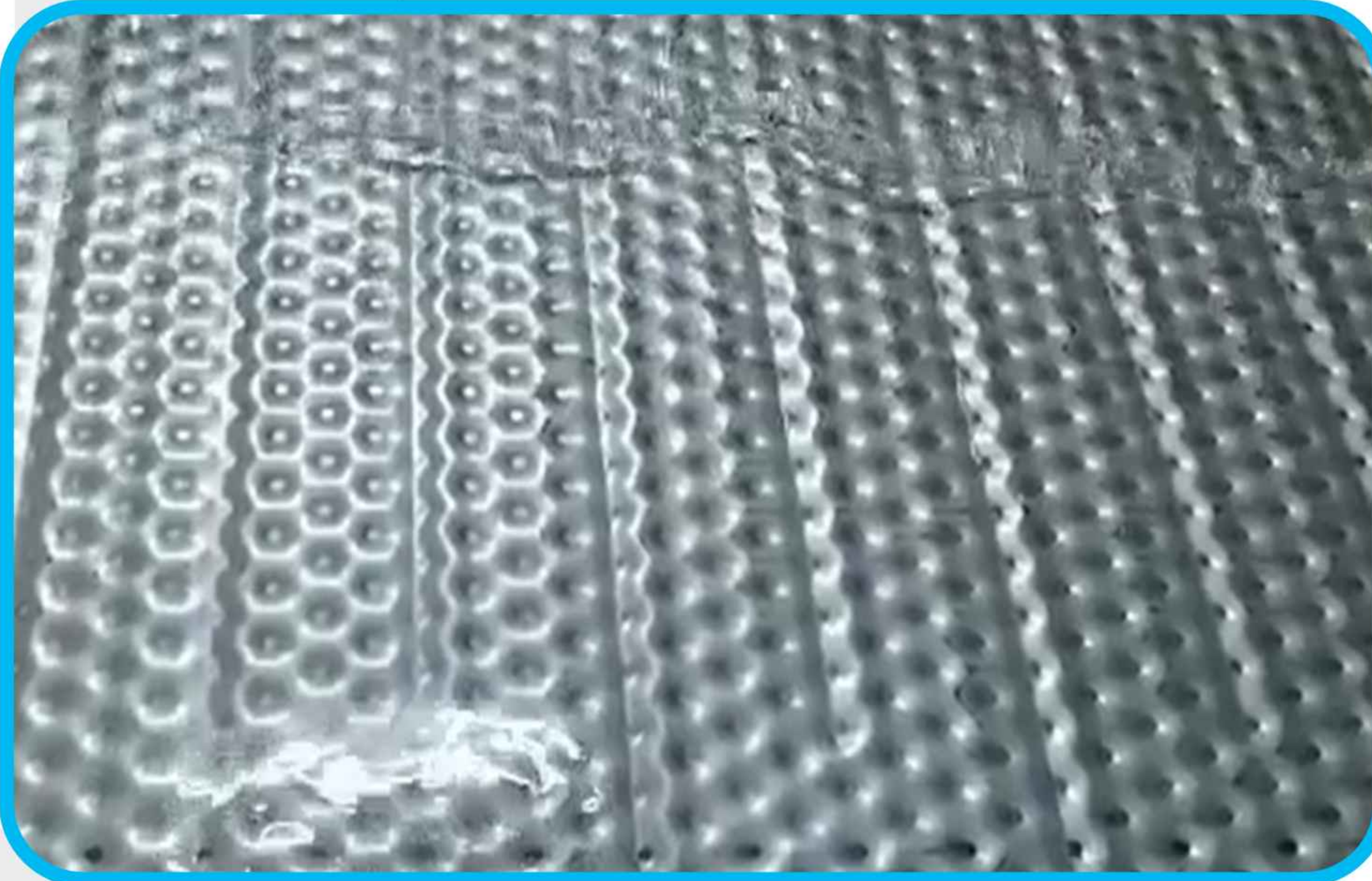
We Have Developed Pillow Plate Machine  
On our own for our In House Production.

Controller : Delta

Laser Source : Adjustable Mode Beam Type.

Nesting Software : Customized for May Fair.

## Hydro Testing Facility



### HYDRO TESTING

We Have Hydro Testing Facility to Check  
Even The Minor Leaks In The Pillow Plates.

Testing Facility Available

1500 mm x 3000 mm (Max.)

## Weld Strength Testing



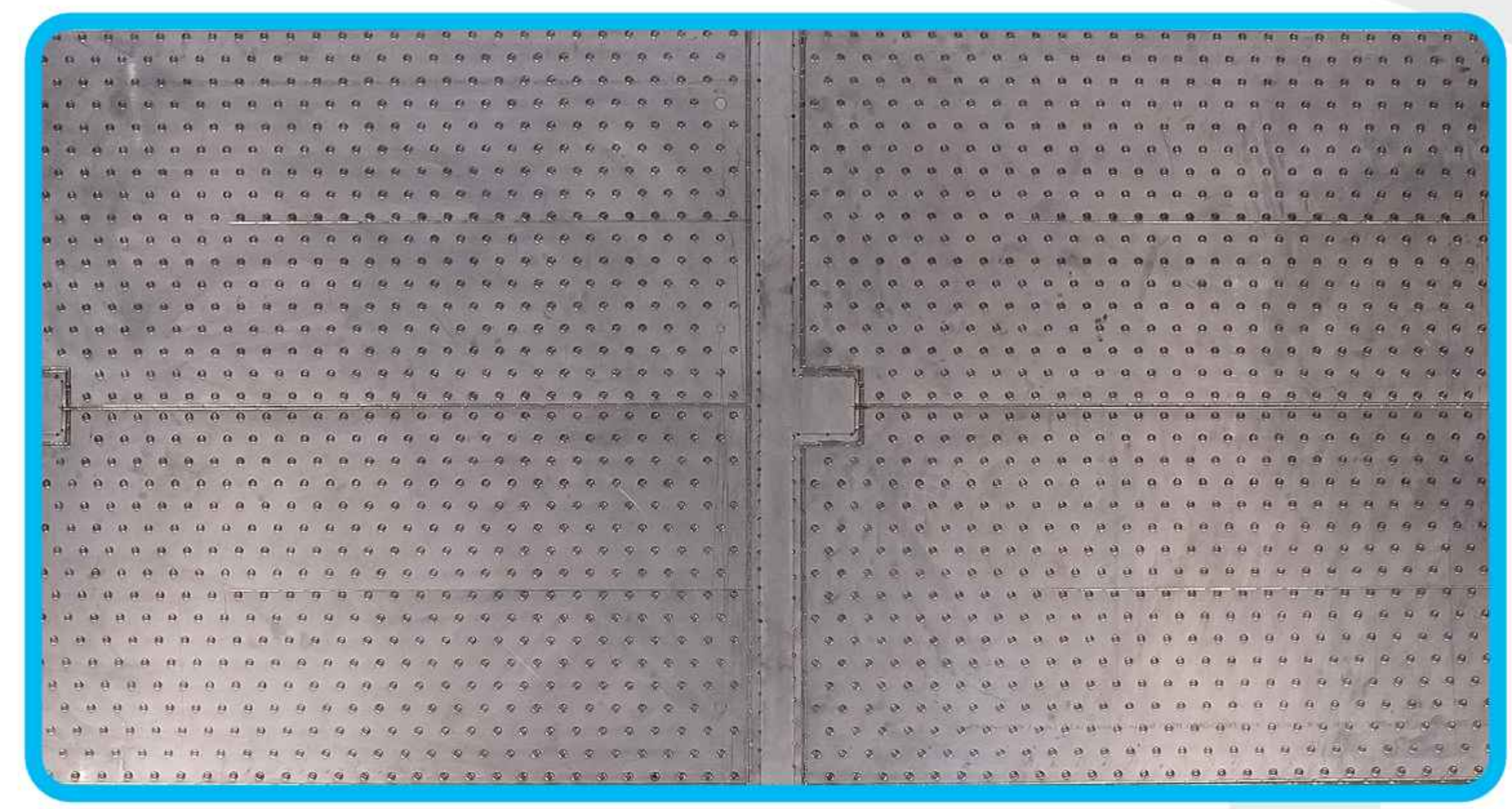
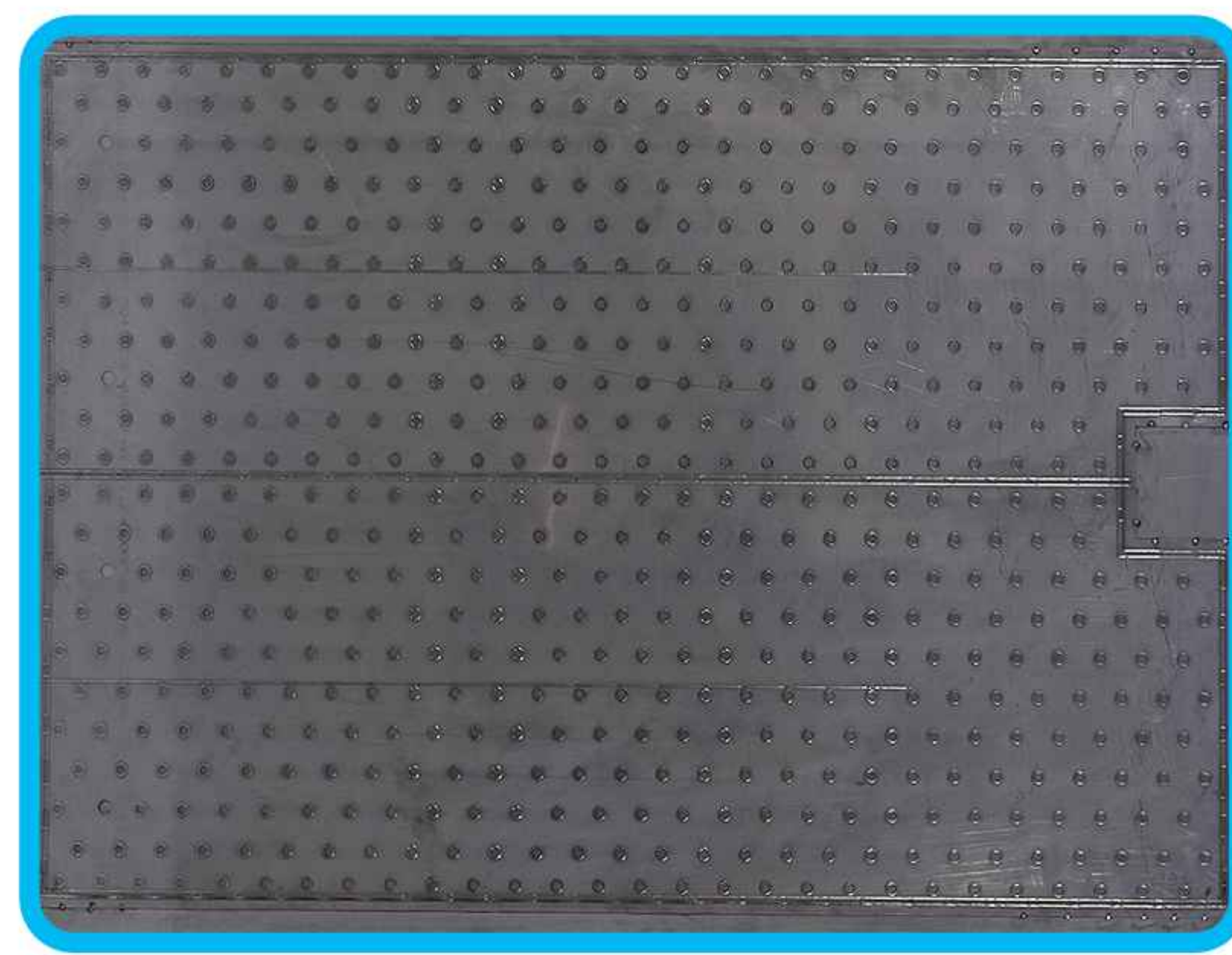
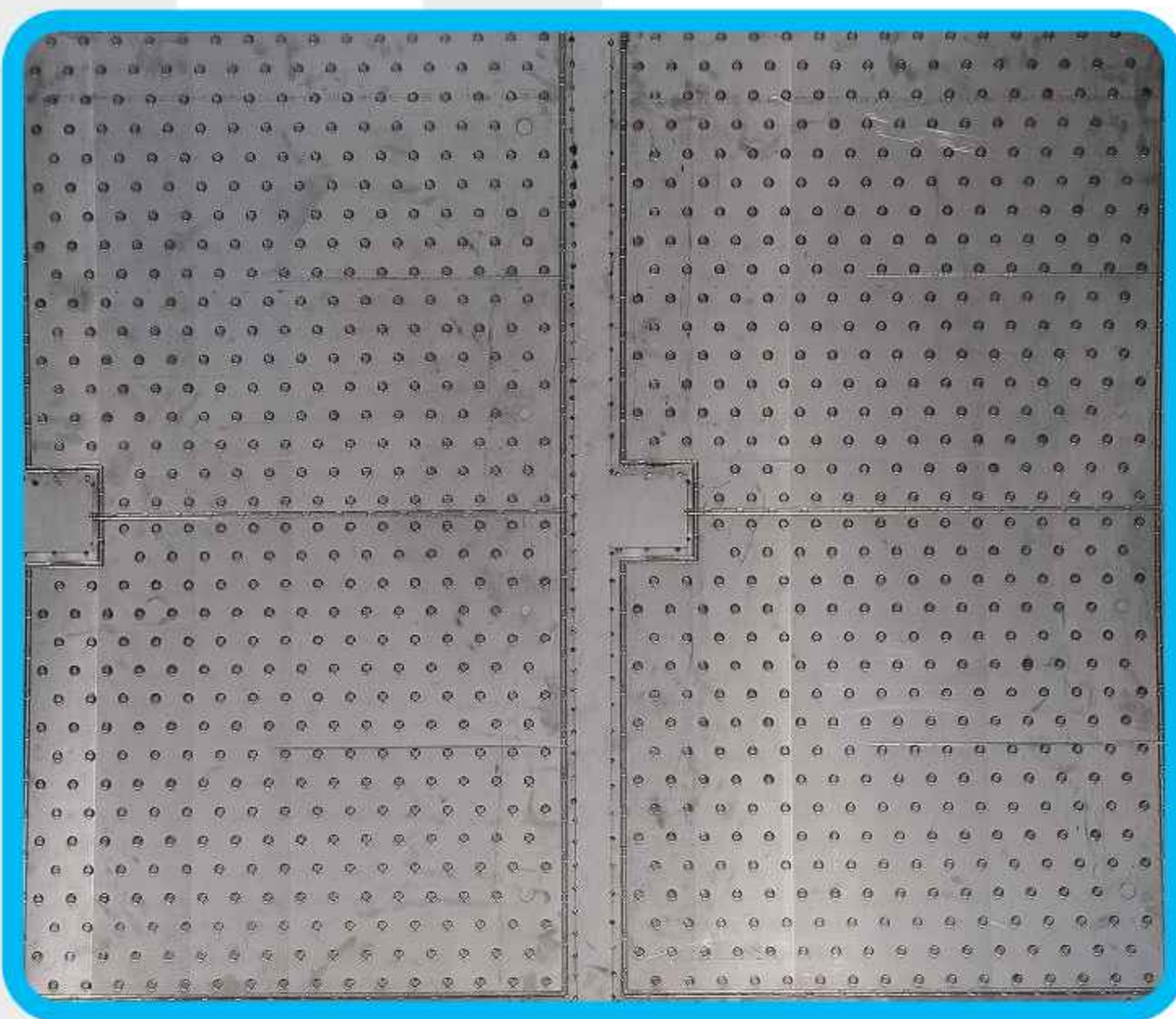
### Microscope Facility

Regular testing is done in each lot  
for the width & penetration using  
microscope.

# MAY FAIR

## BMC PILLOW PLATE SIZES AVAILABLE

1. ROUND TYPE 730 X 730
2. ROUND TYPE 1070 X 1070
3. ROUND TYPE 1500 X 1500
4. D - TYPE 850 X 1250
5. D - TYPE 1250 X 1500
6. D - TYPE 1250 X 1500 (D.C)
7. D - TYPE 1250 X 2500
8. D - TYPE 1250 X 2500 (D.C)
9. D - TYPE 1250 X 3000
10. D - TYPE 1500 X 2000
11. D - TYPE 1500 X 2270
12. D - TYPE 1500 X 2500
13. D - TYPE 1500 X 2780
14. D - TYPE 1500 X 3000



## DOUBLE EMBOSSED PILLOW PLATES

### Thickness

**1.2 + 1.2 mm / 1.5 + 1.5 mm**

### Sizes Available

1. 650 X 1250
2. 1250 X 2500
3. 1000 X 2500

**Any Customized Size Can Be Made Upon Order**

